



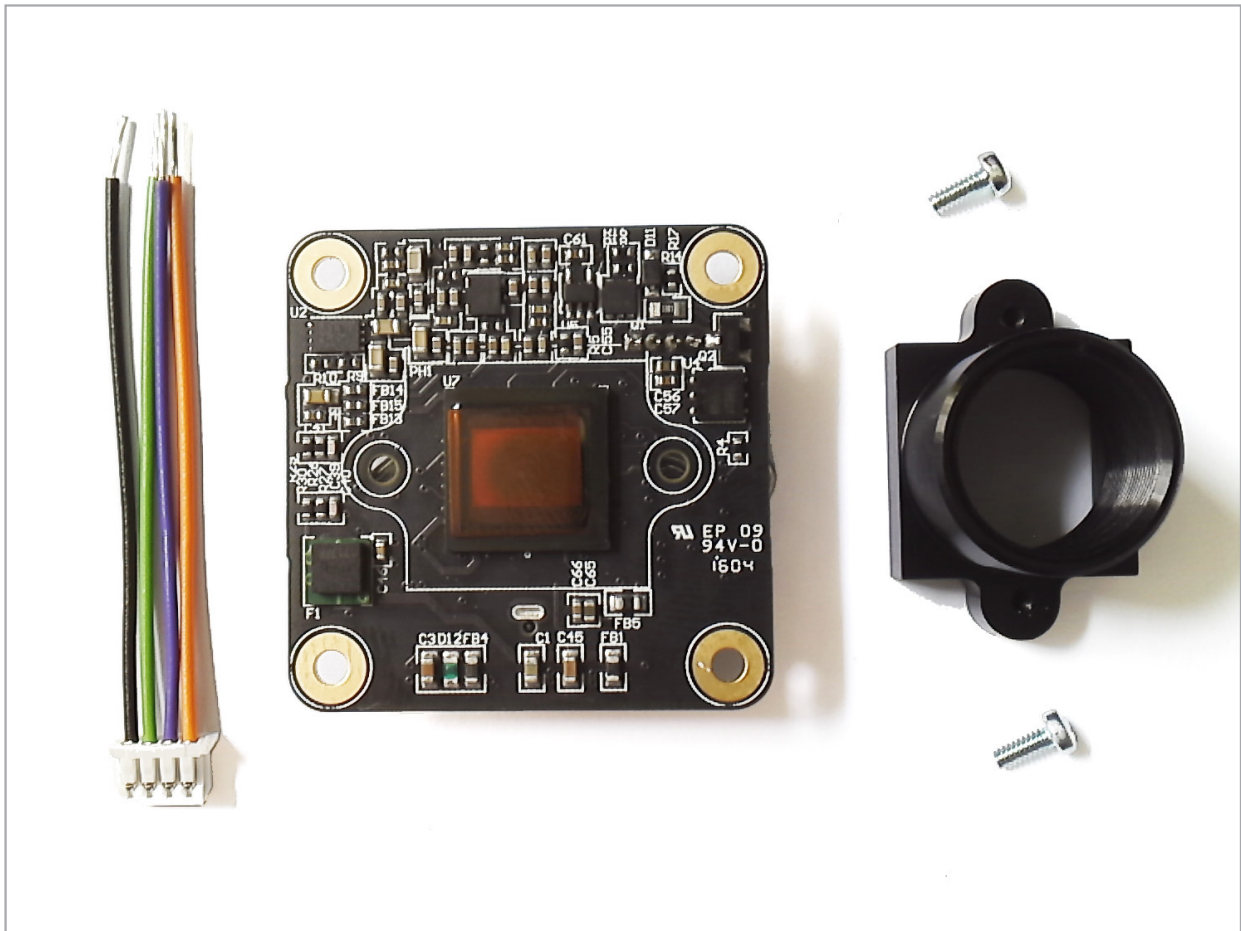
Technical Details

Industrial Cameras: Getting Started with USB 3.0 Board Cameras 27 series



Getting started with USB 3.0 Board Cameras 27 series

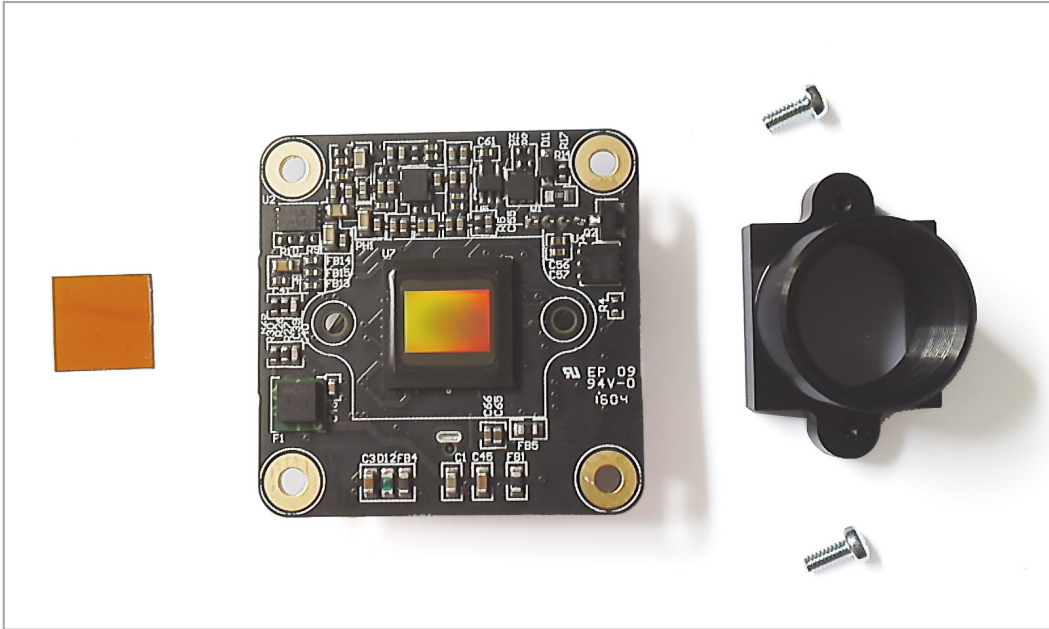
Unboxing



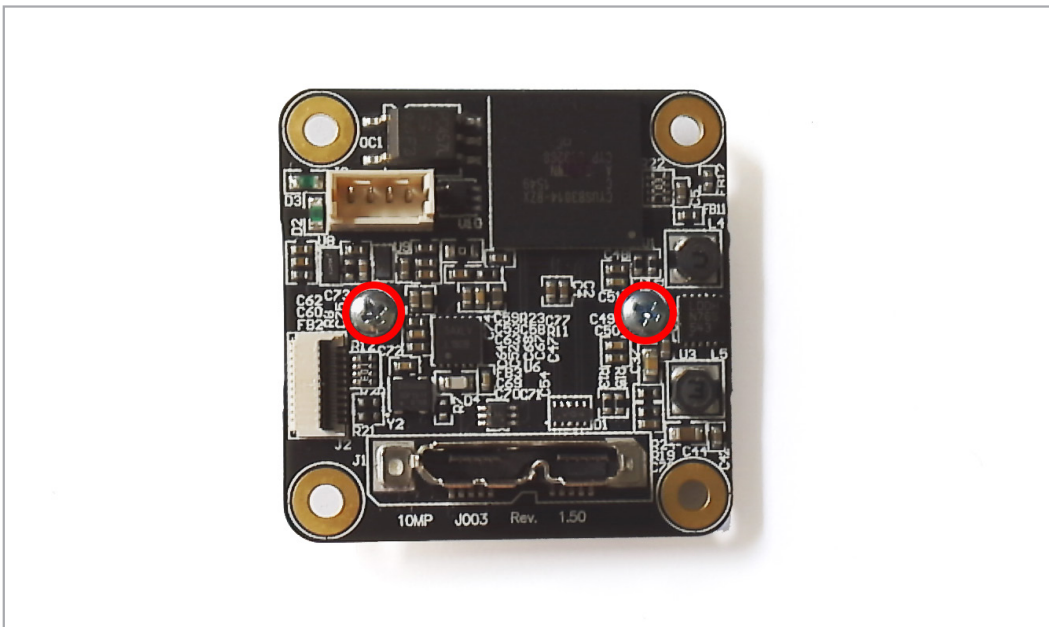
- The items above are included with the USB 3.0 board camera.



Getting started with USB 3.0 Board Cameras 27 series



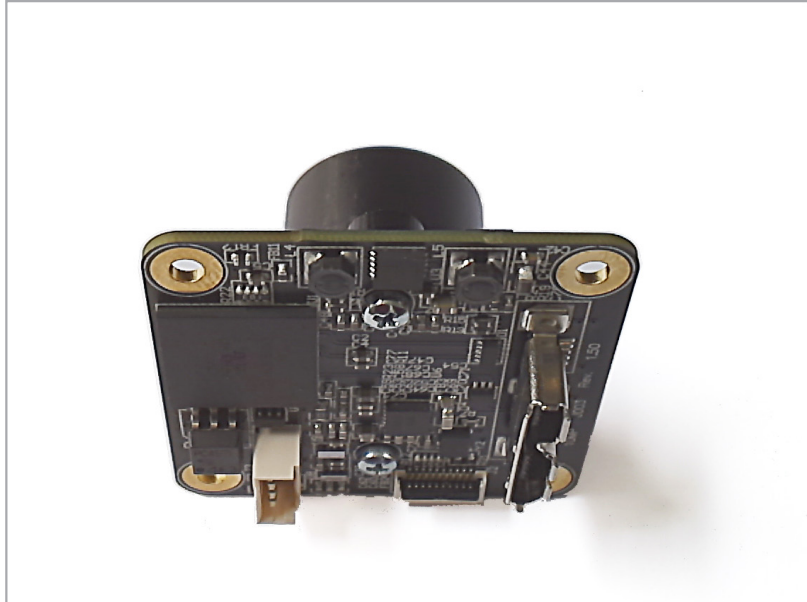
- Remove protective foil from sensor



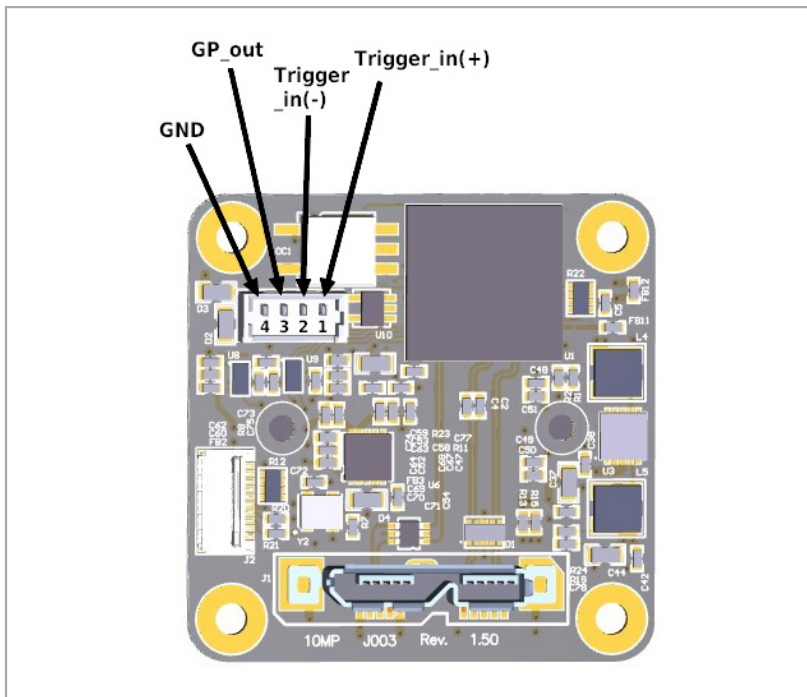
- Place the lens holder over the sensor on the front of the PCB. Turn the PCB over. Using the two fixing screws provided, affix the lens holder from the back of the PCB.



Getting started with USB 3.0 Board Cameras 27 series



- The completed camera:



- Pin assignment



Industrial Cameras: Getting started with USB 3.0 Board Cameras 27 series



Headquarters: The Imaging Source Europe GmbH
Sommerstrasse 36, D-28215 Bremen, Germany
Phone: +49 421 33591-0

North & South America: The Imaging Source, LLC
6926 Shannon Willow Rd, S 400, Charlotte, NC 28226, USA
Phone: +1 704-370-0110

Asia Pacific: The Imaging Source Asia Co. Ltd.
6F-1, No.230, Sec.3, Ba-De Road, Taipei City 10555, Taiwan
Phone: +886 2-2577-1228

www.theimagingsource.com

All product and company names in this document may be trademarks and tradenames of their respective owners and are hereby acknowledged.

The Imaging Source Europe GmbH cannot and does not take any responsibility or liability for any information contained in this document. The source code presented in this document is exclusively used for didactic purposes. The Imaging Source does not assume any kind of warranty expressed or implied, resulting from the use of the content of this document or the source code.

The Imaging Source Company reserves the right to make changes in specifications, function or design at any time and without prior notice.

Last update: June 2016

Copyright © 2016 The Imaging Source Europe GmbH, wpub3board27series.en_US.pdf

All rights reserved. Reprint, also in parts, only allowed with permission of The Imaging Source Europe GmbH.

All weights and dimensions are approximate. Unless otherwise specified the lenses shown in the context of cameras are not shipped with these cameras.